



RECORD

This notebook is of value
to the owner and a reward
will be paid if the finder
returns it to:

Reed C. Rollins

Gray Herbarium, Harvard Univ.

79 Garden St.

22 Sept, 1900.

Cambridge 38, Mass.



D. oligosperma Hook. - Ripley & Barnaby 10536

$2n=58$

Porter 5904 - high polyploid.

5100

Rudbeckia hirta L.

Open grassy hillside, 5 miles northwest
of Missouri River, 8 miles southeast of Wentzville.
St. Charles Co., Mo. June 20, 1951

5101

Rorippa sinuata (Nutt.) A.S. Hitchc. (9)

gravel bank at roadside, 15 miles
west of Colby, Thomas Co., Kansas

June 21, '51

Stoloniferous, fls do not spread

5102

Erysimum asperum

perennial or biennial, simple or branched
above.

Sandy prairie, 4 miles north of
Goodland, Sherman Co., Kansas

Kodachromes

June 21, '51

5103

Callinthe ^{col.} involucrata (T. & G.) Gray

Deep rooted perennial with numerous
stems + flowers yellow
sandy prairie, as 5102

the Kodachromes taken

5104 *Linum sulcatum* Riddell
Fls yellow, easily falling
St. Canyon side, 14 miles north of
St. Francis, Cheyenne Co., Kansas
June 21, '51

5105 *Lathyrus polymorphus* Nutt.
subsp. incanus (S.M. & Rydb.) C. L. Hitchc.
Deep-rooted perennial, as 5104

5106 *Lesquerella angustata* ~~var. incana~~ (Nutt.) ^⑪Wats.
Varying from 4 to ca. 15 inches high depending
on whether exposed or in grassy shade; pedicels
widely spreading to horizontal.
Along outcrop and below it, open prairie,
5 miles west of Cheyenne, Washington Co.
Colorado. June 21, '51

5107 *Rhynchospora simata* (Nutt.) A. S. Hitchc. ⑤
~~strictly grass~~
Formed dense patches, grass
occasional. 7 mi. west of New Raymer
Weld Co., Colo. June 22, '51

5108 *Descurainia pinnata* (Walt.) Britt.
Grassy hill slopes, open prairie, 3 miles
west of New Raymer, Weld Co.
June 22
seed collected

5107 *Lesquerella* ~~sp.~~ *hirsutissima*
 Shady place, pedicels ~~erect~~ *erect*
 ...
 east of ...

5110,
 ...
 pedicels slightly sigmoid,
 fruits siliques or siliques, growing
 in shade of ...
 4 miles north of ...

5111 *Lesquerella pinetorum* A. Nels. ⑦
 ...
 ...
 ...

5112 *Lesquerella* ...
 ...
 ...

with C. B. Potter

- 5113 *Sisymbrium linifolium* Nutt. (3)
Open prairie, near Wyoming Highway 34,
22 miles north of Laramie, Albany Co.
alt 7000. June 20,
with Ted Potter fruticosis
21 = 7
- 5114 *Physaria aitchisonii* (Payson) Rollins (8)
Two size classes of plants present on loose
granitic talus and among rocks, canyon
of the north fork of Snake River, Wyo.
road 34, 14 miles east of Cooke junction
with U.S. road 20, Albany County, Wyo.
June 20.
- 5115 *Lesquerella ~~arguta~~ ludoviciana* (Nutt.) Wats.
Sandy-gypsiferous outcrop, 10 miles
west of Maybell, Moffat Co., Colorado
alt. 6,000 ft. June 25, 51
21 = 10
- 5116 *Lepidium montanum* Nutt.
var. *Jonesii* (Knyl.) Hitchc
Sandstone rocky slopes, mouth of Spirit
Mountain Canyon, Dinwoadie National Monument
Uintah Co., Utah June 26, 51
- 5117 *Stanleya pinnata* var. *integripila* (3)
bas. mostly entire
as 5116

with C. L. Porter

5118 *Physaria australis* (Pursh) Roll. (1)
as 5117

5119 *Besquevelia subumbellata* (Hook. & Grev.)
Juniper Knoll, 18 miles east of Vancouver.
June 24. ca. 7000 ft.
2N=10

5120 *Physaria* (Pursh) Roll. (3)
as 5119

5121 *Leontodon* (Torr) Wats. (2)

5122 *Physaria australis* (Pursh) Roll. (5)
between the ...
2.25 miles north

5123 *Leontodon divaricarpa* A. Nels.
Juniper Knoll near A. Holboellii var.
(6) ... may be
a hybrid. / caudex has numerous ...

5124 *Leontodon innumabile* Gray
Bamby hillside, above station for
(7) 5123

with C. L. Porter

5125 *Arabis* *Halimifolia* (Nutt.) Gray
with 5123

(5)

5126 *Halimolobos viridis* (Nutt.) Schrad.
Among bushes of *Cercocarpus* (mountain?)
hillside, trail entering Lincoln Creek
Canyon, ca. 15 miles south of
Manilla, Dagupan Prov. Palau, July 27
ca. 7,500 ft.

5127 *Arabis lignifera* A. Nels.
as 5126 open hillside

5128 *Arabis lignifera* A. Nels.

Rocky wet slope in small canyon
as 5126

5129 *Leucanthera richardsonii* (Sweet) Schrad.
var. *viscosa* (Roth.) Seelinger
Aspen - *Pinus* ...
12 miles south of
Manilla on ... July 27

5130 *Arabis hirsuticarpa* A. Nels.
as 5129

(9)

with C. L. Patten

5131 *Stanleya pinnata* (Pursh) Britt.
Juniper zone, heavy soil, well
exposed, eastern Mtna. Mts.
Daggett Co. Wyo. alt. 6500 ft. June 27th
S. Idaho

Wyoming

5132 *Lesqueria condurcoides* A. Nels. (5)
Exposed wind blown ^{ridge} ~~knoll~~, 4 narrow
soil bank, Mtn. zone, Sweetwater Co.,
alt. ca. 7000 ft. June 27

5133 *Lesqueria alpina* (Nutt.) Wats. (7)
Exposed wind blown ridge
south of Medicine Co., Sweetwater Co.,
alt. ca. 7000 ft. June 27

5134 *Arabis demissa* Greene
^{var. ruscifolia Rollins} (12)
S. West slope of Cedar Mountain,
Juniper assoc. - siliques pendulous
Sweetwater Co., 5100
alt. 7000 ft. June 28

2n = 21
n = 10
2n = 21

5135 *Arabis Holboellii* Hornem, var. *pinnatum* (7)
as 5134 siliques pendulous to
more shrilly ~~upward~~
2n = 21

5136 *Pulsaria australis* (Pursh) Roll. (1)
as 5135

with C. L. Porter

- 5136 *Phiparis australis* (Pursh) Roll. (4)
near top of Cedar Mt. ca 8,500 ft.
otherwise as 5136
- 5137 *Stipa straminea cordata* Nutt.
Southeast slope of Bear Mountain,
among bushes & mountain mahogany
alt. 8,500 ft. June 29th
fixed
- 5138 *Lesquerella alpina* (Nutt.) Wats. (9)
Open rocky bank among brush
as 5137
- 5139 *Lesquerella Holboellii* Hornem., var. *retrofracta* (Drink) Rydb. (4)
Among bushes, higher up
alt. ca 8,500 ft. June 29th
- 5140 *Sisymbrium elegans* (Jones) Payson (8)
Open very flat, ca 5 miles north
of Hays Fork, extreme southwestern
Sweetwater Co. June 29th
alt. ca. 6,500 ft.
fixed

with C. L. Pattee

5141 *Lesquerella condonata*
Open knoll,

ca. 30 miles north of Home Base
southern Trenches - 2040
June 29, 1951 alt. 5,200 ft

5142 *Sisymbrium montanum* Nutt (6)
forming a ground cover
clay soil

ca. 22 miles north of Home Base
southern Trenches - 2040
June 29 - alt. 5,200

5143 *Lesquerella* *huloviciana* (Nutt.) Wats (6)
dry hills - 2040
alt. 5,140

5144 *Sisymbrium* *montanum* (Wats.) Rydb. (9)
dry hills
alt. 5,140 alt. 5,200

Stanleya viridiflora fixed from Cedar Mt., not
old enough to collect. - marked *Stanleya*
viridiflora *

~~This first collection is from the~~
~~north of Cedar~~

Colorado

- 5145 *Physaria anthralis* (Purp.) Roll. (10)
Leaves much like *P. austriaca*
Seleniferous shale with *Stenogyne pinnata*
Boulder - Lyons road (Colorado State Route
7) 10 miles south of Lyons, Boulder
County, Colo. July 3, 1951
22 = 8
Stems decumbent, rosette of leaves flat,
plants from 4 to 16 inches across

- 5146 *Physaria vitulifera* Rydb. (9)
Dry granitic slope ~~with~~ *Pinus ponderosa*
Rhus glabra assoc., near mouth of
Gregory Canyon, near Boulder, Boulder
Co. July 5, 1951

- 5147 *Arabis Fendleri* var. *spilifolia*
Pinus^{ponderosa} *paucitaxya* assoc. - granite
soil under *Pinus*, 15 miles
southwest of Sedalia, S. slope of
Douglas Co., Colo. - July 6, 1951
alt ca 7,000 ft. 22 = 14
with Charles
Wingston

- 5148 *Thlaspi glaucum* A. Nels. (2)
as 5147
22 = 14

with the ...

5149

Physaria acutifolia Rydb. (9)
Granitic shale, ^{Physaria punctata} between Sedalia
and Decker. 15 mi. northwest
of Sedalia, Douglas Co. alt. 7000
July 6

Stems prostrate or ascending, leaves
mostly entire, basal leaves ...
not forming a flat rosette
Differs rather markedly from plants
of *P. vitulifera* around Decker.

5150

Physaria acutifolia Rydb. (6)
Open granitic knoll, very abundant
1 mile above South Fork of South
Platte River, Douglas Co. alt. 6500
6 miles northeast of Decker
July 6

5151

Physaria acutifolia Rydb. (5)
Granitic talus, 2 miles west of
Decker, Jefferson Co., alt. 6500
July 6

5152

Wasseriella montana (Gray) Wats. (5)
Red sandstone escarp, just north of
Empire, Park County, alt. 2000 ft.
1 plant seen
July 6

with W. A. Walker and Clark, August

- 5153 *Braya humilis* (C.A. Meyer) Rollins.
Fls. white, ^{subsp. ventosa Rollins}
alpine tundra, rocky slope of high ridge
between Hossier Pass and North Star Mountain
border of park and Summit Counties,
alt. 12,300 ft. July 7, 1951
Fixed 1 1/2 miles west of Hossier Pass
- 5154 *Thlaspi coloradense* Rydb.
as 5153
- 5155 *Draba lanceolata* Royle (4)
Dry situations - as 5153
7:5-10
- 5156 *Draba cuneata* Vahl (2)
loose soil at roadside - alt. 12,000 ft.
as 5153 except - park country
- 5157 *Smelowskia confusa*
among rocks
- 5158 *Draba ~~Singii~~ streptocarpa* Gray (2)
as 5153 except in Summit Co.
- 5158a *Draba Singii streptocarpa* Gray (2)
loose granitic soil at roadside, alpine tundra
as 5156 park Co.,

with W.A. Weber & Charles Livingston

5157 *Erigeron*
as 5153

5160 *Cardamine cordata*
moist springy hillside
North slope, mouth of Monte Cristo Creek,
about 2 miles north of Hesperia pass,
Summit Co., Colo. July 7
Field alt. 11,000 ft.

5161 *Smelowskia calycina* (Steph.) C.A. Meyer, var. *American*
^{Fls. pale white}
large flowered, among rocks, on lowest
slope of Hesperia ridge, alt 12,000
July 8, 1951 park Co.
2n = 12

5162 *Smelowskia calycina* (Steph.) C.A. Meyer
^{var. *American*}
small flowered - fls. slightly purplish
as 5161
2n = 12

5163 *Draba crassa* Rydb. (7)
crevices of boulder field - as 5161

~~5164 *Eutrema* *humboldtii*
as 5161
in crevices of rocks~~

with W. A. Weber & Charles Livingston

5165 *Arabis bannonia* Wats. (2)
Among rocks, alt. 12,800 ft
except near top
ridge. border of peak & Summit

5166 *Arabis crassifolia* R. S. Grah. (8)
Open dry soil, sparse in an area
Hosier Pass, Park Co. Colo.
July 9, 1905 alt. 12,800 ft.

5167 *Arabis nivalis* Bly., var. *exigua* (Schulz) C. L. Hitchc.
~~Arabis nivalis~~
Rocky slopes, between Hosier Pass
and North Star Mt., alt. 12,800 ft. (3)

5168 *Arabis nivalis* Bly., var. *exigua* (Schulz) C. L. Hitchc.
as 5167. may be same species (3)

5169 *Habenaria virgata* (Nutt.) Schulz
dry area in meadow
4 miles southwest
Park Co. Colo. July 10, 1905
alt. 9,000 ft.

5170 *Ornithoglossum streptocarpum* Gray (6)
Dry grave near moist meadow
as 5169

(alone)

Colorado

5171 *Astragalus*
Fls. bluish, red soil, open
place in ponderosa pine stand,
between Anastro Junction & Fairplay,
9 miles northwest of Anastro Jct.
alt. 9,500 ft. July 11, 51

5172 *Phacelia leucophylla* Torr. (5)
Det. ~~George~~ Constance
Granite on a steep slope,
1 mile west of Monarch Pass,
Summit Co. ~~July 12~~
alt. 11,000 ft.
July 12, 51

Diarrhena nuttallii Gray
white flowers

(5)

Lespedeza cuneata Rydb. (7)
Stems small, several, can be
as 5172

5175 *Penstemon tenuirostris* Greene
Forming a dense mat on
granitic soil, rock out, 4 miles
west of Research place, Gunnison Co.
alt. 10,200 ft

5176 *Draba spectabilis* Greene, var. *oxyloba* (Greene) ^{July +} _{Schubert}
⑨
Fls. white, bilobed sepals, stem
weak at apex. Sagebrush
pine open ~~mountain~~ ^{knolls}, dry
slopes, 2 miles with Sargents,
Gunnison Co., July 12 - alt. 10,900 ft

5177 *Penstemon tenuirostris* Greene
Fls. blue, lower sepals, ~~bilobed~~ ^{bilobed} ~~sepals~~ ^{sepals} ~~bilobed~~
mat as 5175

5178 *Phlox multiflora* A. Nels.
⑤
Fls. white, forming a mat, upper leaf
cross

5179 *Oxytropis*
Fls. carmine, open knoll, sagebrush
area, near gate to k, 1.5 miles
northwest of Sargents, Saguache Co.,
alt. 10,200 ft

colorado

5180 *Astragalus*
 stems succulent, fls. redish purple
 July 12

5181 ~~*Sida*~~ *heptanactis* *purpurea* Torr.
 fls. white with pinkish tint; ^{to}
 steep, ^{and} ^{near} ^{mt.}, 1/2 mile
 northeast of ^{San} ^{Antonio}, ^{Saguache} ^{Co.}
 alt. ca. 8,000 ft July 12

5182 *Lepidium montanum* Nutt.
 var. *alpinoides* (Gray) Jones
 gravelly area near ^{Trinidad} ^{Peak},
 1/2 mile southwest of ^{San} ^{Antonio},
 Saguache Co. alt. ca. 8,000 ft

fixed

5183 *Penstemon procerus* Douglas
 1/2 mile ^{west}, as 5182

5184 *Galium boreale* L. var. *intermedia* DC
 stems ⁱⁿ ^{open} ^{area} ^{near} ^{stems}, fls.
 white as 5182

fixed

5185 *Trichogon rivularis* Nutt.

Bushy tree about 16 ft tall, new bark
smooth and white.

(5)

Wet depression, 31 miles southeast of
Cunucun, Saguache Co., July 12
alt. ca. 5,500 ft.

5186 *Phaseolus floribunda* Rydb. (11)

~~Talus~~ ^{as above} ~~near~~ ~~as above~~
as 5185 = ~~same~~ ~~as above~~ abundant
from insect injury.

5187 *Agave*

Found in a patch of ~~open~~ ~~land~~
near ~~meadow~~ but along road
2-3 miles ~~west~~ ~~of~~ ~~meadow~~
as above alt. ca. 5,500 ft.
Saguache Co.

5188 *Sidalcea neomexicana* Gray (6)

Fls. reddish purple, pale
near meadow as 5187

det. C. L. Hitchc.

5189 *Penstemon Tenuirodes* Greene (5)

Dry soil near meadow
as 5187

Colo.

5190

Lupinus
 Stems up to 6 in. in diam.
 Dry, subalpine scrub, sagebrush, etc.
 23 miles southeast of Gunnison,
 Saguache Co. alt. ca. 8,000 ft.

5191

Tetragahus
 Fls. probably white, as 5190

5192

Alchemilla geyeri S. Wats. var. *geyeri*
 Fls. light to dark purple, moist
 meadows - 10 miles southwest
 of Gunnison, Saguache Co.
 ca. 7,600 ft. July 12

(6)

5193

Arabis Crandallii Robinson (4)
 Crevices of granite rocks, sagebrush
 area, 9 miles south of Tsa toward
 Lake City, Gunnison Co. July 13
 alt. ca. 8,000 ft.

5194

Arabis Crandallii x *A. H.*, var. *retrofracta*?
 Siliques spreading at right angles,
 among mossy rocks & sedge
 wet spots in north of Tsa
 S. W. Co. alt. ca. 8,000 ft.

5195 *Arabis Holboellii* var. *viridifolia* ①
Siliques. *Arabis* *holboellii*
as 5194 *Sida* *viridis*

5196 *Physaria floribunda* Rydb. ⑧
Exposed bank on slope with loose
rocks, 15 miles south of Tola - alt ca
± 1000 ft.

5197 *Arabis densa* Greene ④
Abundant on bank with igneous
rocks, 18 miles south of Tola on
the highway.

July 13

5198 *Leptospermum multiflorum* Torr.
det. I. M. Johnston
Stems several to numerous, among
sagebrush in the pine belt
28 miles south of Tola
Gunnison Co.

5199 *Lupinus floribundus* Greene
Fls. bluish purple, stems red
as 5198

Colorado

51100 *Valeriana edulis* Nutt. ex T. & G.

(8)

51100a *Mimulus linearis* (Pursh) Heimerl.

(2)

as 51102 Shrub 6-10 ft. fl. yellow

51101 *Asclepias Hallii* Gray det. R. E. Woodson, Jr.

Fls. white with rust-colored sepals,
dry talus, 13 miles north of
Lake City, Hinsdale Co. alt. 8,000 ft.

July 13

51102 *Hesperis dumosa* (Nutt.) Heller

at foot of ... near Lake Fork ...

(8)

Sumner River, 6 miles north
of ... alt. 8,500 ft.

51103

Sarcocolla stolonifera Michx.

Scrambling shrub with cones about
4 ft. long, bark reddish
as 51102

(8)

57104 *Physaria floribunda* Rydb. (10)
boose tains near Lake Fork 5 (the
-unison River, 5 miles north of
Lake City, Hinsdale. alt. 8,500 ft
July 13

57105 *Physaria atropurpureum* Heller
Fls. corolla purple. petals 5
-linear, notched at tip.
-white.
-Henson side of Lake Fork
of Lake City, Hinsdale. July 13
alt. 8,500 ft

(12)

57106 *Physaria glandulosa* Nutt. det Lincoln Constance
Fls. purple.
-top.
57105
Hinsdale

57107 *Physaria Fendleri* Gray (2)
Greenish
-side of Lake Fork
211 = 28

57108 *Penstemon tenuis* Greene (6)
Fls.
1 mile north of Lake Fork
alt.
July 13

Colorado

51107 *Cryptantha Weberii* Johnston
 Fls. white, in a ...
 ... rocks, ...
 above beds to the ...
 Pine, 15 miles ...
 Lake ...
 Det. I. M. S.

51113 *Gratia aurea* Vahl
 ...
 ...

51114 ~~*Symphoricarpos utahensis* Robinson~~
Symphoricarpos oreophilus Gray

(6)

...
 ...

51112 *Suaeda* ...
 Rocks ...
 ...
 alt. 13,500 ft. Fls. ...
 ...

51113 *Tribulus nanum* Torr.
 Fls. white to ...
 small ...
 as 51112 Det. J. M. Silllett

51114 *Cactylispa*
 Fls. reddish purple,
 as 51112

(3)

5115 *Castilleja megacalyx* (Gray) Parry
Fls white - as 5112

5116 *Arenaria obtusiloba* (Rydb.) Fern. (3)
~~*Arenaria*~~
Fls white, & in crevices of rocks

5117 *Dracopis viscosum* Nutt.
Fls white
(3)

5118 *Phlox*
Fls white - as 5112

5119 *Araba graminea* Greene (3)
among rocks

5120 *Lesquerium beeringianum* C. & S. subsp. *earlei* (Rydb.)
Fls white
Hulten

5121 *Campanula*
Fls deep blue to purple
as 5112

Colo.

57122 *Arenaria obtusiloba* (Rydb.) Fern.
willet, fls. white
Hinsdale Co.

57123 *Saxifraga debilis* Engelm.
fls. white

①

57124 *Saxifraga caespitosa* L.
willet, fls. white
as 57122

①

57125 *Draba graminea* Greene
Hinsdale Co. 4-10-1912

57126 *Senecio*
Hinsdale Co. as 57122

July 15

57127 *Saxifraga*
Hinsdale Co. as 57122
alt. 12,500 ft 2 miles south
of Hinsdale

57128 *Impatiens rivale* (Greene) Rydb. ①
as 57127 - rocky bank

Colorado

51129 *Penstemon whippleanus* Gray
Fls. blue, as 51128

(3)

51130 *Thlaspi* ~~*fulvum*~~ *Fulleri* Gray
Mead. mountain meadow - near
Nellie Creek, 5 miles north of the
junction with Hanson Creek
alt 11,000 ft. Hinsdale Co

July 15th

51131 *Chimaphila* *geyeri* S. Wats. var. *tenuum* M. E. Jones
as 51130 - Fls. rather purple

6

51132 *Pedicularis groenlandica* Retz.
Fls. purple as 51130
as 51130

51133 *Geranium macrophyllum* Willd.

(4)

51134 *Asarum* *bakeri* Greene
Fls. deep blue to purple

51135

... ..
Fls reddish - ~~... ..~~ specimen
for woods as 51130

57136

... .. elegans Pursh
very dense, common in forest
with
... ..
... ..
alt 10, 50 ft

(9)

51137

... .. globosa Nutt.
Fls pink to whitish
d. 57136

(6)

51138

... .. attenuatum Greene

det. J.M. Silleb
... .. guttatus DC

(6)

(Steph.) C.A. Meyer

beeringianum C. & S. subsp. *carlesii* (Rydb.)
Hultén

quinquefolia Rydb.

(4)

crassa Rydb.

(3)

amoenum (Greene) Rydb. (3)

Bakeri Coult. & Rose
Det. Lincoln Constance

aurea Vahl (1)

fladnizensis Wulf. (3)

graminea Greene (3)

Colorado

130 () *Crassifolia* R. Grab. ??

(1)

5007 () *Chromophila jamesii* Benth.

Watr.

(8)

San Juan Co

subviscosa Rydb.

(#)

July 16

beeringianum C. & S. (4)
subsp. earlei (Rydb.) Hulten

caespitosa L.

(2)

Colorado

51161 *Eryngium anserinum* (Greene) Rydb.
Rocky, no flowers yet, like purple
as 51160

51162 *Abramo* ~~crassa~~ *crassa* Rydb. (6)
as 51161

51163 *Eryngium anserinum* (Greene) Rydb. (3)
part of the mountain range northwestern
Colorado
July 16

51164 *Eryngium*
as 51163

51165 *Abramo* *Crawhallii* Robinson (11)
growing in open, rocky, mountainous
places, in the association, dry
hillside, near Lake San Cristobal,
6 miles south of Lake City,
Huerfano Co., alt 8,700 ft
July 17, 1938

Colorado

51166

Artemisia linearis (Pursh) Heimbr.

Fls. pale yellow, baselines
near white

(5)

River, 12 miles south of Sapinero ^{Summit}
toward Lake City, Larimer Co.
alt. 7,500'

July 18

Artemisia pinnatifida Nutt., var. *calcarea* (Jones) Brand
Det. H. L. Mason

perennial
51166

51167

Artemisia utahensis Koehne

Shrub, in the ...

17 miles south of Sapinero Summit
with ...

(8)

alt. 7,500'

Sidalcea neomexicana Gray

flowers ... purple
as ...

Det. C. L. Hitchcock

51170

Artemisia

1 mile south of Sapinero Summit
toward Lake City, etc.

51171 *Mimulus floribundus* Dougl.
Annual, fls yellow, wet crevices
rocks,
as 51170

(10)

51172 *Rorippa curvicalyx* (Hook.) Barr.
(Wats.) Hitchc.
River bank as _____ 18
Fr. _____
as 7. 22

Utah

51173 *Aquilegia chrysantha* Gray
Fls yellow, green stems
up to 2 ft. tall, in the
Wataatch plateau, 23 miles west to
Springdale on road to Tipton,
Emery Co. alt. 7300 ft. July 19

(7)

51174 *Corydalis aurea* Willd.
Fls yellow, stems numerous
as 51173

1175

rydbergii A. Nels.

Fls. blue or lavender, forming
panicle 1-2 ft. across
at base of the plant
as 4-5

(5)

foliosissimum Gray

Fls. blue or lavender, white
at base of the plant
as 4-5

(4)

coerulea Raf.

8

oreophilus Gray

Fls. blue or lavender, white
at base of the plant
near the summit of
Emery's Peak, July 22.

trilobata Nutt

Plant 4 ft high

(4)

242

Thalictrum luteum Nutt.

Fls yellow - medium

(10)

Thalictrum scariosum Pennell

Fls mostly blue but with reddish purple
sometimes, stems one to several, very

(6)

herbaceous 17 inches tall
erect, one or two stems
ascending, fls blue - all the
leaves

Cryptantha Bakeri (Greene) Payson

Fls white with yellow
spots, 15

erect, stems, fls

Det. I. M. J.

Alisma Chambersii Rollins

(4)

Stems present above ground
as 51182

21110?

Wata

Wata

Wata

Wata 12

Wata 7.00

Wata boreale Nutt.

Stems

Wata

Wata

Wata

5187

Wata hemisphaerica Maguire (8)

Stems

junction of stem

last of phloem, turgid

Wata

Utah

51720 *Ribes cereum* Dougl.

Base of ...
...
...

(7)

scopulorum Tidestrom

...
...

(5)

intermedia (Wats.) Hellen

(9)

5120

...
...
as 5193
2.1.18

51200 *Silene petersonii* Maguire
var. *minor* Hitchc. & Maguire

...
as 5193

51202 *Araba subalpina* Soodm. & Hitchc.

(2)

Steep slope - as 5193

51203 *Silene rubicundula* Rollins

Steep slope, pedicels erect. ...

Utah

multiflorum Torr. (5)
det. I. M. J.

Safford Co

Chamberii Rollins (7)
var. *membranacea* Rollins

$2n = 20 ? 22 ?$

51207
Forming mats up to
10' wide & 1' high
as 51207B

51208a

binum Kingii S. Wats - Bryce Canyon

Utah

Richardsonii (Sw.) Schulz
Belknap, subsp. incisa (Engelm.) Britt.

126

Mountain west of Mt.

Tusha mts.

July 18

Utah

at 5120 ft

July 21

127

barbeyi Huth.

the deep purple
climber of the
like a
mountain

128

vaccinioides Rydb.

(5)

the
mountain

(5)

odoratissima Benth.

the
mountain

(5)

?

the
as 5120 ft

Utah

51214a *Phlox caespitosa* Nutt. var. *puberula* Wherry
caespitosa Nutt.

Caryocarpus (Steph.) C.A. Meyer
var. *Americana*

24512

Utah

Stems 3

Wardii Wats.

(12)

Stems 12
2n = 12

spicata Nutt. var. capitata Gray

(5)

Stems

Stems about 8 inches high
and up to 1 foot across

Utah

512

Pteryxia Hendersonii (Cott. & Rose) Math. & Const.
Det. Lincoln Constance

From ... of ...

Arabis Brunsonii

steep slopes in deep soil

Sarcocolla Watsonii Underw.

Det. R. M. Tryon, Sr.

... of ...

caespitosus Nutt

①

... pink ...

Solanum petersonii Maguire

...

Utah

231

Eriogonum

longipes

Stellaria longipes Goldie

var. *laeta* (Richd.) S. Wats.

(4)

Agropyron scitineri Vasey

Stellaria

(4)

232

Stellaria laciniata (Gray) Rydb.

deep soil near granite

(3)

Wyoming

51235 *Stanleya pinnatifida* Nutt. (6)
fl. stems erect, stem base woody
base, rocky sagebrush community
alt. July 23rd

51236 *Hedysar*
Stems succulent, fruit pedicel
as 51235

with Ted Foster
↓

51237 *Stanleya pinnatifida* Nutt. (6)
side by side
alt. July 23rd

alpina (Nutt) Wats. (10)
var. *spathulata* (Rydb) Payson

July 26

Nutt.

(3)

51240 *Agoseris*

Fls yellow, basal leaves variable
2.3 miles west of Durbins, above falls
of Big Wind River, alt. 8,200
Spruce-fir forest - July 27.
Fremont Co., Wyo.

51241

Agoseris
Fls yellow, basal leaves variable
2.3 miles west of Durbins, above falls
of Big Wind River, alt. 8,200
Spruce-fir forest - July 27.
Fremont Co., Wyo.

51242

Agoseris divaricata A. Nels.
Fls yellow, basal leaves variable
cut back, spruce fir forest, 1.5 miles
west of Durbins, alt. 8,200
Spruce-fir forest - July 27.
Fremont Co., Wyo.

(6)

with C. L. Porter

Park Co.

7,

(b.) Bernh.

9

$2n = 14$

5 1357

5 1322

$2n = 14$

51253

Descurainia
May 31
Mt. ...
Beartooth ... Park ...
July 20 ...

51254

Descurainia
...
...
...

51255

Descurainia Richardsonii (Sweet) Schleg
Clay Butte, *subsp. viriosa* (Rydb.) Bellamy
1/2 mile west of Beartooth Peak,
northwest ... July 30, '51
alt 9,500

51256

Arabis leucocoma var. *leucocoma* (12)
Heavy rocky soil, petals lilac to whitish,
siliques slightly pendulous, just below
right angles to rachis - as 51255
Stems decumbent at base

51257 *Thlaspi perinflora* A. Nels.
Grassy ridge-top, as 51255

(10)

51258 *Draba lanceolata* Boyle
Fls. white - as 51257

(9)

51259 *Draba stenoloba* Ledeb.
Fls. yellow - as 51257
annual

(3)

51260 *Draba aurea* Vahl.
Perennial, fls. yellow
as 51257

(3)

51261 *Draba crassifolia* R. Hook.

(6)

Fls. yellow, in places where snowdrift had
melted, as 51255

51262 *Cardamine vallisneriae* Greene (4)
primarily leafy,
occasional flowers
found in subalpine wetland
Montana - P. extreme northwest
Park Co. Wyo. alt. 2,000 July
30.

51263 *Cardamine* (1)
Rocky opening in spruce-fir forest
near ^{U.S.} Highway no. 12, 1/2 mile south of
Montana line in extreme northwest
Park Co. Wyoming. July 31, 1951
alt. 7,500 ft. (6)

51264 *Cardamine* (8)
as 51263

51265 *Cardamine* var. *retrofracta* (6)
as 51263

(20)

Nutt.

Fer. white
Rock cre
Faintly
July 31st

(15)

vallicola Greene

Fer. white, ^{leaf} honey of stone
July 31st

(14)

S. Wats.

1266

Fer. purple, ...
to top of ridge. Day Bottle
not ...
July 31st

(7)

pectinipila sp. nov.

51269

Racem. ...
caespitosa, ...
up to ...

5125 *Sida oligosperma* Hook. (17)
Foliis ovatis, basi cuneatis, apice mucronatis
nerviis, nerviis 10-15
ca 5' 208
2 1/2

5127 *Sida incerta* Payson (16)
longitudo, 10-15
2 1/2

5128 *Sida apiculata* C. L. Hitchc. (9)
longitudo, 10-15
2 1/2

5129 *Sida oligosperma* Hook. (12)
longitudo, 10-15
2 1/2

5130 *Sida calycina* (Steph.) C. A. Meyer
var. *americana*
longitudo, 10-15
2 1/2

Paysonii Macbride

(10)

incerta Payson

(14)

incerta Payson

(10)

nivalis Lidj., var. *brevenula* var. nov.

51279

Leucoscampa Ryd.

nivalis Lidj., var. *exigua* (Schulz) C. L. Hitch.

(8)

Loudocarpa Rydb

(2)

nivalis (Waldst.) var. *aeigua* (Schubert) C. L. Hitchc.

79

51281 *Arabis* fl. *paucicaulis* Rydb

(2)

Firehole River, Yellowstone Nat.

Park. Aug. 3, 1951

2n = 14

51282 *Trifolium* *montanum* Nutt.

(1)

Yellowstone Nat. Park

51283 *Trifolium* *montanum* Nutt.

(1)

51284 *Arabis* *divaricata* Rydb

(1)

divaricata Rydb

(1)

51285 *Stanleya* *viridiflora* Nutt.

(7)

Clay Rivoli, 20 miles north

R. Springs

Colorado wild flowers

51286 *Draba* *sp.* Vahl (6)
 Ridge of North Star Mt. south slope
 1 mile west of Horse Pass,
 alt. 12,000 ft. Aug. 1908
 Park Co

51287 *Draba* *linearis* Royle (6)
 1 1/2 miles west of Horse Pass
 alt. 12,000 ft. Aug. 1908
 no. 5153

border of Park & Summit Counties

51288 *Braya* *humilis* (C.A. Meyer) Robinson (11)
 alt. 12,000 ft. rep. *ventosa* Rollins

Draba *linearis* Gray
 area

211 = 14

51290 *Draba* *sp.* a. nels.

alt 51 = 80

211 = 14

(11)

no. A. Heberlein found in the vicinity

Rollins

park Co., Mont. at 13,500
Aug 8 1914

calycina (Staph.) C.A. Meyer
var. americana

exunguiculata (Schulz) C.L. Hitchc. (3)

spectabilis Greene
var. discycarpa (Schulz) C.L. Hitchc. (2)

57294a D. exunguiculata (Schulz) C.L. Hitchc. (1)

crassifolia R. Hale.

(3)

Draba nivalis Hilg., var. *exigua* (Schulz) C. L. Hitchc.
no 51294

Wats.

(9)

Draba coccinea Rydb.

(9)

Rocky talus, northwest slope of
ridge - 12,500 ft
no 51291

51299 *Erysimum nivalis* (Thunb) Rydb.

(9)

no 51294 suspected, fls. yellow

51300 *Lesquerella rubicundula* Rollins

Byce Canyon, Utah

Aug. 17, 1951

51301 *Linum Kingii* S. Wats.

no 51300

Herbarium

... with an occasional plant ...
... a yellow center. North ...
... was a very ...
... with ...
... (alt. 5500) with an ...
... plant with ...
... and ...
... and ...
... same species.

5201 *Parthenocissis brachycarpa* Nutt.

open woods
March 29, 1952
Tennessee

stylora Gray

5 miles east of Lebanon, Wilson Co., Tenn.
March 29

uniflora (Michx.) Britt.

no evidence of hybridization

5204 *Saxifraga virginiana* Michx.

bedges of limestone outcrop, moist area.
5 miles southwest of Lebanon, Wilson Co., Tenn.
March 30

- 5205 *Heavenworthia uniflora* (Michx.) Britt.
 Southern edge of Lebanon, ^{look} ~~at~~ ~~the~~
 petals white; plants common in large
 March 30, 52
- 5206 *Heavenworthia stylosa* Gray
 Fls white to ^{light} ~~orange~~, occasional yellow
 large stand - 2 miles north of
 Lebanon
- 5207 *Lesquerella perforata* Rollins
 Fls. white to pale lavender, center yellow,
^{open} ~~open~~ field, ~~near~~
 5 miles north of Lebanon, Wilson G.
 March 30, 52
 siliques pyriforme, sparsely pilose or more
 commonly glabrous $n = 8$
 fls
- 5208 *Lesquerella perforata* Rollins
 open ^{partly} ~~field~~ at the west edge of
 Lebanon - as 5207

5209 *Lesquerella hearnii*
abandoned field, eastern edge of Nashville
march 30, 1952 - Davidson Co.

(Fixed) $n=8$

5210 *Lesquerella toulara* Gray
Petals white to pale lavender
shallow lobes, ...
open pasture, 1 mile west of Bordeaux,
Davidson Co. March 31, 1952

5211 *Thalictrum laevigata* (Muhl.) Pair.
Base of cliff in shale, 10 miles northwest
of Bordeaux, Cheatham Co., Tenn. March 31
Petals white to pale lavender, just ascending
sepals.

5212 *Lesquerella* (Gray) Wats.
Roadside, 11 miles northwest of
Bordeaux near state highway no. 12;
as 5211 March 31, 1952
Cheatham Co.,

5213 *Lesquerella* (New.) S. Wats.
base of bluff near Cumberland River,
Bull Run Fishing Camps.

$n=7$

Davidson Co., March 31, 1952

5314 *Lesquerella* - *Securii* (Gray) Wats.
occasional two miles north
of Malensville.
U.S. Highway # 4.
Williamson County March 31, 1952

5215 *Lesquerella demipila* Rollins
Fls. yellow, abundant in open glade,
1 mile north of College Grove,
Williamson Co., March 31, 1952
N = 8

5215a *Leavenworthia toulosa* Gray
fls. lavender with yellow centers
as 5215

5216 *Leavenworthia* [aurea] Torr.
found south of 1/2 mile
north of Malensville, Tennessee
1 mile north of Malensville
Williamson County March 31, 1952

5217 *Lesquerella demipila* Rollins
this is the same as
near Duck River, roadside
Marshall Co., Tennessee March 31, 1952

5218 *Leavenworthia torulosa* Gray
 near ...
 March 31, 1952
 flowers white ...
 inflorescence ...
 fruit ...

5219 *Leavenworthia [aurea] Torr.*
 flowers white ...
 good flat. the ...
 March 31, 1952

5220 *Leavenworthia uniflora* (Nickle) Britt.
 flowers white ...
 flowers ...
 March 31, 1952

5221 *Leavenworthia stylosa* Gray
 flowers white ...
 side ...
 south of ... U.S.
 March 31, 1952

5222 *Leucocorypha densipila* var. *maxima* Rollis
1950
Tennessee
on overgrown
road
H = 8

5223 *Leucocorypha densipila* var. *maxima* Rollis
1950
Tennessee
road
H = 8

5224 *Leucocorypha densipila* (Gray) Wats
1950
Tennessee
road

lis

5025 Sibaria virginica

no 5274

5226 Leammantia stylosa Gray

[Faint handwritten notes and bleed-through from the reverse side of the page]

stylosa Gray



Tennessee - Occell River
near Copper Hill

Pictures of plants 1951

- Roll 1) *Rubus*, *Heracium*, *Houttonia*, *Ceanothus*,
Moribium, *Veronica*, *Rubus*, *Umbellifer*,
Rudbeckia, *Rorippa*.
- Roll 2) *Eryngium*, *Asplenium*, *Tradescantia*,
Opuntia, *Asplenium*, *Tradescantia*
- Roll 3) *Urtica*, *Yucca*, *Tradescantia*, *Helianthus*, *Penstemon*,
Melastromum, *Cleome*
- Roll 4) *Cleome*, *Tradescantia*, *Asplenium* (2 kinds), *Lesqueris*,
pubula, *Tradescantia*, *Sedum*, *Daphniphyllum*,
Scotlanche, *Phytolacca*, *Cryptanthus*
- Roll 5) *Cryptanthus*, *Dryopteris*, *Phacelia*, *Senecio*,
Halimolobos, *Salpiglossidium*
- Roll 6) *Urtica*, *Tradescantia*, *Asplenium*, *Tradescantia*,
Lepidolobum, *Tradescantia*, *Phytolacca*,
Paeony
- Roll 7) From summit of *Horowitz* Hill, *Iris missouriensis*,
Pentstemon, *Scilla*, *Penstemon*, *Sedum*,
Caulophila, *Astagalma*; Mt. *Garlandia*,
Tel forte

R. 16 *... ..*, Red Canyon

R. 16a Bryce Canyon

R. 17

R. 18 Tetons - Yellowstone, *minulus* (small)
minulus ~~not~~ *weinsii*.

R. 19

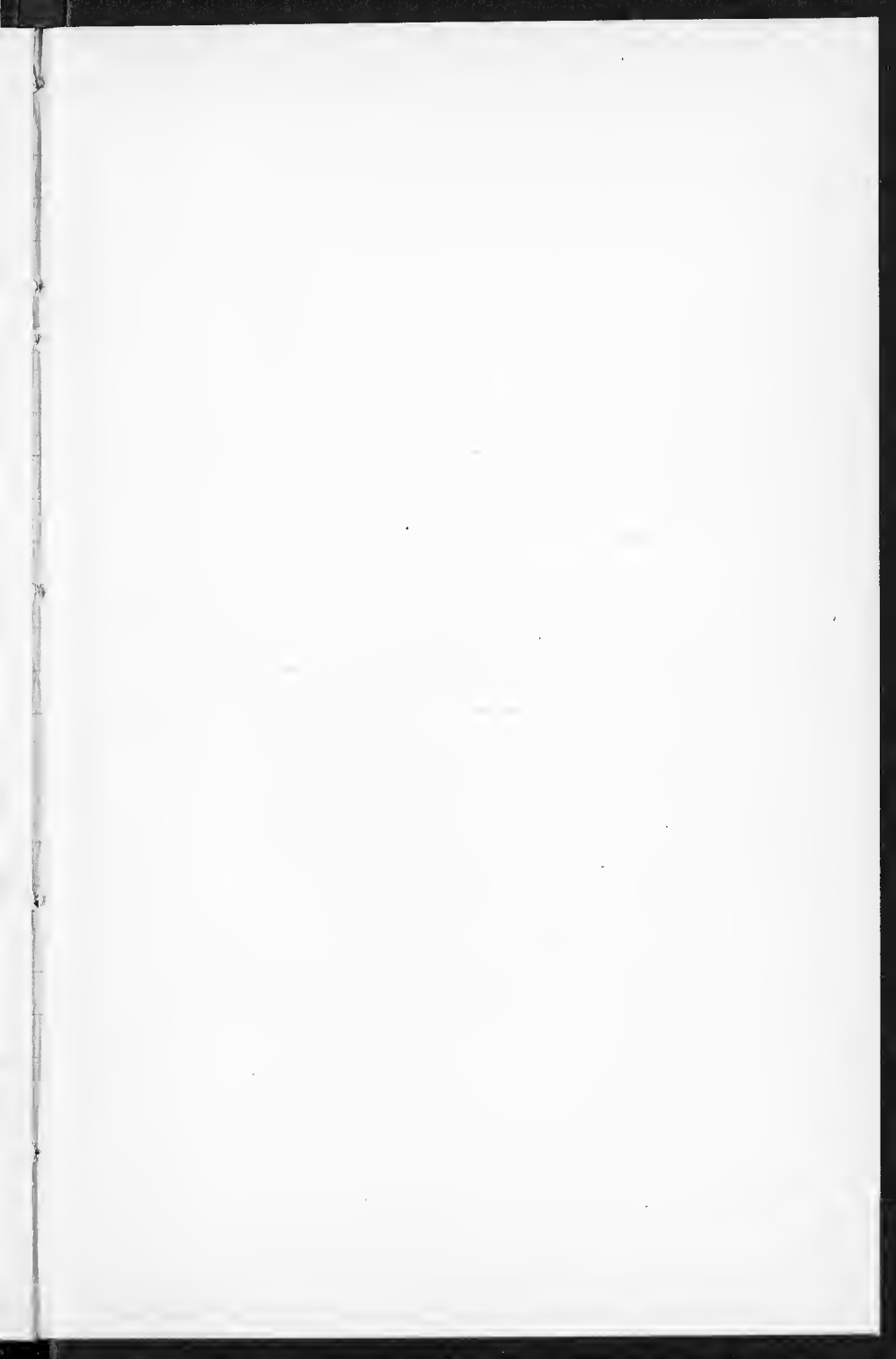
... .. ^{pk} *... ..*, *Epilobium*
... .., *... ..*
... .., *... ..*, *... ..*
... .., *... ..*, *... ..*
... .., *... ..*

R. 21

... .., *Chromola lutea*, *C. serrulata* (white & purple), Bryce - Wyo - Colo - Utah

R. 22

Bryce Utah



Cambridge	June 14	Spd rdg	32,709
Salt Lake	Aug. 20	39,933
			<u>32,709</u>
			7224

7224
 .07 ¢ per mile.
505.68

17
 31
 26
74
 10
740.
 28
 9
225

8379
 6848
1531

3062
 06
183.72

3062
 05
153.10

138.70
 15
66856

131.70
 19.75
151.45

1170
20550

7224
 .08
597.92

577.92 Car
 740.00 subsistence
 225.00 Soap hire
 80.00 horse-hire
 110.00 return fare

1732.92
 108.00 - Special
 + wages with
 painter
1840.92

118

1100
 740
1840

Charles G. ... 3m ...

Dubois 95
... ..
... ..
... ..

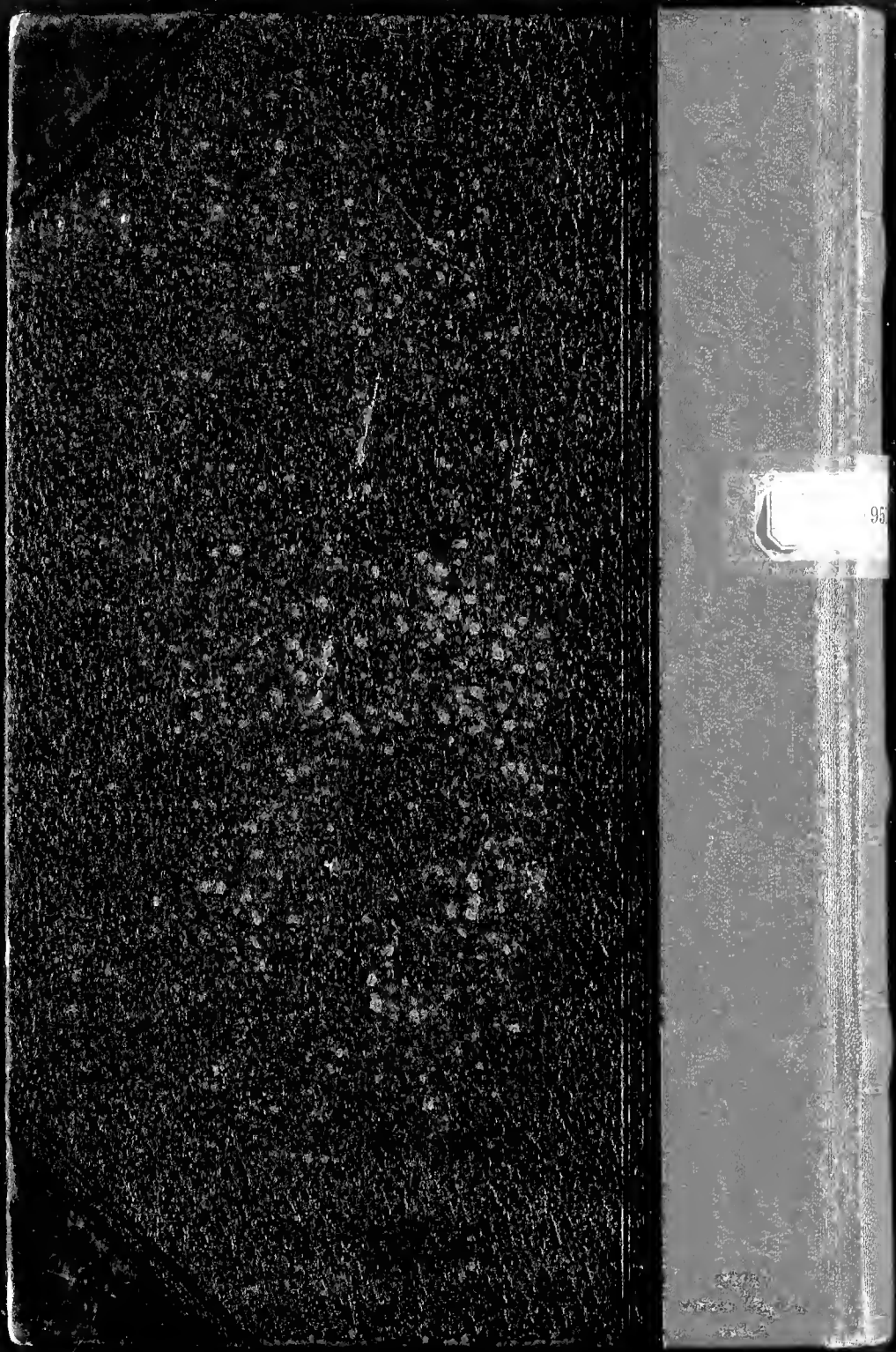
Antennae
... ..

... ..
... ..
... ..
... ..

764

7500/2

Reed C. Rollins



 95